



2021 Kansas QSO Party Rules

28 Aug 2021 1400 – 0200 UTC 29 Aug 2021 1400 – 2000 UTC
Saturday 9-9 CDT Sunday 9-3 CDT

2021 Highlights

- Spell **KANSAS, QSOPARTY, SUNFLOWER** and **YELLOWBRICKROAD** as you work our 1x1 call operators to earn antique radio stamps and fill your certificate. Plaques, monogrammed sweatshirts and T-shirts continue as part of the prize package. Earn a KSQP T-Shirt by collecting all nine of our original stamps! The Kansas QSO Party also continues as part of the State QSO Party Challenge.
- In addition to our Mobile and Portable categories, we have a **new Rover category**.
- Thanks to Bruce/WA7BNM, **we now have a log submittal form option**.
- We continue to appreciate and honor our medical heroes with the **M for Medical Challenge**. See the Kansas QSO Party web site for details.
- We appreciate sharing the weekend with our Ohio and Hawaii friends. **Special awards will be given to the highest scoring Ohio and Hawaii log entries!**

OBJECT

Stations outside of Kansas work as many Kansas stations in as many Kansas counties as possible. Stations in Kansas work everyone.

EXCHANGE

Kansas stations send signal report and county. Stations outside of Kansas send signal report and state, Canadian province, or DX. **See below for FT8 special category rules.**

QSO POINTS

Stations may be worked once on Phone, once on CW and once on Digital per band. Each complete non-duplicate Phone contact is worth 2 points. Each complete non-duplicate CW or Digital contact is worth 3 points.

MULTIPLIERS

Multipliers are counted only once. All stations log Kansas contacts with 3-character county abbreviations. The KS abbreviation is not used. Log all other contacts as two characters. Use DX for stations outside of the United States and Canada.

Kansas Stations – maximum of **64 multipliers** including:

- US states (50) – The first Kansas county logged counts as the Kansas multiplier.
- Canadian provinces/territories (13) – AB BC MB NB NL NT NS NU ON PE QC SK YT
- DX (1)

Non-Kansas Stations – maximum of **105 Kansas county multipliers**

BONUS STATION

All stations receive a one-time bonus of 100 points for contacting **KSOKS** – the club call of the Santa Fe Trail ARC. Bonus station contacts also count for QSO credit on all allowable bands and modes.

SCORE

Total score = (QSO points x multipliers) + bonus points (maximum 100)

FREQUENCIES

Contact stations on 80, 40, 20, 15, 10 and 6 meters. WARC band contacts and contacts using repeaters, digipeaters or the internet do not count. All contacts must be simplex.

Suggested frequencies (recommend staying in the General parts of the bands):

- **HF CW** - 40kHz up from band edge (mobile window 35-40)
- **HF Phone** - 3840, 7240, 14240, 21340, 28440
- **HF Digital** - around customary calling frequencies
- **VHF** - around customary calling frequencies or on simplex frequencies

ENTRY CATEGORIES (Select one plus optional FT8 category)

- **Single-Op QRP** - 5W max, one transmitted signal
- **Single-Op Low Power** - 100W max, one transmitted signal
- **Single-Op High Power** - greater than 100W, one transmitted signal
- **Multi-Op** - any legal power, multi/multi allowed, one transmitter location
- **Youth** – any legal power, one transmitted signal (see below)
- **Kansas Club** - any legal power, multi/multi distributed ops allowed (see below)
- **Kansas Mobile Single-Op Mixed** - 100W max, one transmitted signal, driver
- **Kansas Mobile Single-Op CW Only** - 100W max, one transmitted signal, driver
- **Kansas Mobile SSB Only** - 100W max, one transmitted signal, Single or Multi-Op
- **Kansas Mobile Multi-Op** - 100W max, one transmitted signal, CW or Mixed mode
- **Kansas Mobile Unlimited** - more than 100W and/or multi/multi, any mode
- **Kansas Mobile Unassisted** - 100W max, solo driver/operator, any mode
- **Kansas Portable** - any legal power, multi/multi allowed (see below)
- **Kansas Rover (new)** – any legal power, Single-Op or Multi-Op (see below)
- **Canada or DX** - any legal power, one transmitted signal, Single-Op only
- → **FT8 Single-Op**, 100W max, one transmitted signal (see below)

MISCELLANEOUS

1. Kansas stations should call CQ Kansas QSO Party, CQ KSQP or CQ KQP.
2. Stations calling Kansas should call CQ Kansas or CQ KS.
3. Kansas mobile stations should identify /M or /county. Kansas 1x1 stations should ID with their actual callsign at least once an hour as per FCC regulations.
4. The use of spotting nets using DX clusters, packet nodes, telephone, or other means is permissible for all entry categories.
5. CW contacts must be made in the CW portion of the band. No cross-mode contacts.
6. Mobile is a station that is self-contained and capable of legal motion (street, water, or air) while operating, motion optional.
7. All Kansas Mobile categories may use an additional driver except Unassisted.
8. Mobile unassisted stations are not expected or encouraged to operate while driving.
9. Kansas stations that change counties are considered to be a new station and may be contacted again for point and multiplier credit.

10. If a Kansas station is on a county line between two or more Kansas counties, a separate QSO must be logged for each county listed as worked.
11. Mobiles travelling together may log each other only once per county.
12. **Kansas Club** operations all use the same call sign and may be distributed over multiple member locations. Avoid simultaneous transmissions on the same band/mode. Turn in one combined log.
13. **Youth** category is for youth ages 17 and under. One or more youth operators may be assisted by a control operator if they are unlicensed.
14. **Kansas Portable** is an operation at **one or two locations** using equipment and/or antennas which must be set up at each location and cannot be used in motion.
15. **Kansas Rover** is an operation at **more than two locations** using equipment and/or antennas which must be set up at each location and cannot be used in motion.
16. → **FT8** Log signal report and grid square. Turn in a separate log (text file, ADIF or Cabrillo format) named call_FT8.LOG (ex: W0BH_FT8.LOG). In-state and out-of-state winners will be determined by counting non-duplicate contacts (no multipliers). **Do not include FT8 contacts in your regular KSQP log.**
17. Operator safety is our highest priority. **Please follow current CDC and government COVID-19 guidelines** as appropriate.

ENTRIES

Entries must be date-stamped or postmarked no later than October 1. Only one entry per call sign is allowed plus one FT8 entry. Entry submission implies that the contestant agrees to be bound by the decisions of the Kansas QSO Party Coordinator.

Be sure to include your call sign, name, address, location and entry category. If you qualify as a Kansas Rookie, please note that as well. Use the standard Cabrillo header or additional text lines at the top of the file as necessary. Distributed Club logs and Kansas Mobile, Portable and Rover logs should be combined into one log file for submittal.

The Kansas QSO Party is part of the State QSO Party Challenge. More information may be found at <http://stateqsoparty.com>. All participants are encouraged to submit your score and comments to the **3830 Reflector: www.3830scores.com** as part of this Challenge. To be eligible for a Kansas QSO Party award, you also need to submit a log to the Kansas QSO Party as shown below. Please submit a log regardless of your score!

Entries with incomplete or improperly logged contacts will be subject to penalties or disqualification. Duplicate QSOs do not result in penalties and are not counted for points. **Please do not remove duplicates** as they may be used to prove the integrity of other logs.

Name your electronic log(s) with your call sign (ex: W0BH.LOG, W0BH_FT8.LOG).
The deadline for log submission is October 1.

Method 1 (preferred) – Upload your Cabrillo format log (except FT8) to:

<https://ksqp.contesting.com/ksqpsubmitlog.php>.

You'll get immediate confirmation and our Logs Received page will be updated.

Method 2 – Attach your (FT8) log file to an email with your call sign in the Subject line. Send the email to logs@ksqsoparty.org. **If you have a Cabrillo log, use Method 1.**

Method 3 - Paper logs, or logs on electronic media may be submitted via postal mail to:
Kansas QSO Party, c/o Bob Harder, W0BH, PO Box 746, Hesston KS 67062.

AWARDS

	Power	Single-Operator	Multi-Operator	Mobile Portable Rover	Youth	Canada	DX	FT8	Club	CW
Non-KS	High	1	4	na	5	6	7	21	na	24
	Low	2								
	QRP	3								
KS	High	8	11	12-19	20	na	na	22	23	25
	Low	9								
	QRP	10								

First Place – Choice of a monogrammed sweatshirt or plaque awarded to First-place entries with 50 or more contacts. Multi-Op and Club categories receive a plaque. FT8 category receives a sweatshirt. There is no minimum contact requirement for the FT8 category.

Second and Third Place - An Antique Radio Stamp T-Shirt will be awarded to all single-op Second and Third-place entries, sponsors and 1x1 call operators who don't already have one. Multi-op and Club categories, international stations and stations who already have a T-shirt earn our certificate / stamp award instead.

Kansas QSO Party CW Award - This plaque or sweatshirt is awarded for the highest CW score by a Single-Op participant not in a Mobile, Portable or Rover category. All logs at any power level will be rescored after SSB contacts are removed. If the winner operated mixed mode and would also qualify for a category win, the winner will have a choice of awards with the unclaimed award going to the next qualified participant. You may operate mixed mode and still be eligible for this award. This award is offered for both in-state and out-of-state participants.

Kansas QSO Party Sunday Award - This plaque or sweatshirt is awarded for the highest Sunday (Day 2) score by an out-of-state Single-Op participant who didn't win a category. All logs at any power level will be rescored after Saturday (Day 1) contacts are removed. You may participate on both days and still be eligible for this award.

Worked All Kansas Award - A sweatshirt is awarded to any station contacting all 105 counties. Worked All Kansas has been awarded the past ten years.

Kansas Rookie Award - This plaque or sweatshirt is awarded at the discretion of the Coordinator to a first-time Kansas QSO Party participant in a Single-Op category or operation.

Kansas Sunflower Award Bonus Drawing

Every non-winning Kansas log (minimum 25 contacts) receives one entry and every non-winning non-Kansas log receives one entry for each unique 1x1 call worked in separate bonus drawing pools. If you didn't win a category, you might still win one of our monogrammed amateur radio stamp T-shirts or sweatshirts!

KANSAS QSO PARTY CERTIFICATE and ANTIQUE RADIO STAMPS

Awarded for spelling **KANSAS**, **SUNFLOWER**, **QSOPARTY** or **YELLOWBRICKROAD** using suffixes of selected 1x1 calls.

- **Duplicate letters in a word require two different 1x1 calls.**
- **Letters may be shared** between words.
- **KS0KS** counts as a wild card and **may be used once in place of one missing letter.**

Example spelling KANSAS and SUNFLOWER

w0K k0A n0N k0S n0A w0S w0S n0U w0N w0F k0L w0O w0W n0E **KS0KS**

Our collection certificate, first issued in 2015, has room for all nine stamps. **You only need one certificate.** We keep track of which stamps you have earned for this certificate, not counting previous certificates which also had these stamps. You will be able to download your certificate in pdf or jpg format, and your stamp(s) will come by mail.

Until you fill your certificate, you may **choose ONE stamp for the first word** you spell, **ONE stamp for the second word**, and **ONE stamp if you spell all four words.**

To receive your stamps (and certificate if needed):

- **send in a log**
- **send an email** with your call in the subject line to kansas150@hotmail.com
- **include your name as you'd like it to appear on the certificate**
- **include which stamp(s) you'd like in order of preference in case we run out**
- **you can earn a maximum of 3 stamps**

If you prefer, we can print and mail your certificate.

Send the details above and \$3 to cover paper, ink, and mailing expenses to:

Bob Harder, W0BH, PO Box 746, Hesston KS 67062 (make check to Bob Harder).

Antique Radio Stamp T-Shirts

Stations who have earned all nine stamps on the nine-stamp certificate in a previous year, who don't already have a T-shirt, and who turn in a 2021 log will automatically receive the antique radio stamp T-shirt (US only due to high postage costs).

Collect all nine of our original stamps and earn your own monogrammed Kansas QSO Party antique radio stamp T-shirt!

Antique Radio Stamps

You can earn these genuine antique radio stamps by working our 1x1 call operators during the Kansas QSO Party. Follow the directions above under Kansas QSO Party Certificate and Antique Radio Stamps.



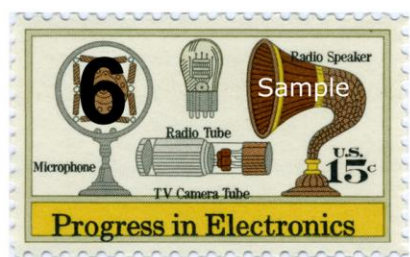
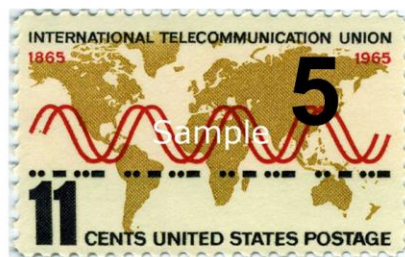
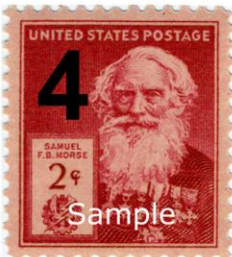
#1 - Issued December 15, 1960. Commemorates Echo I, the first passive communications satellite.



#2 - Issued December 15, 1964 on the 50th anniversary of the ARRL. Note that 2014 was the ARRL Centennial. Commemorates the amateur radio operators who provided emergency communications for the Alaska earthquake earlier in the year.

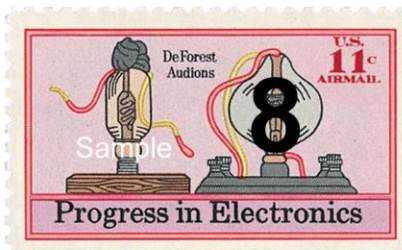
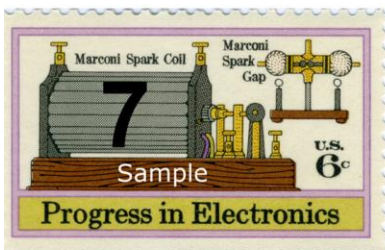


#3 - Issued August 1, 1967. Commemorates 25th anniversary of the Voice of America.



#4 - Issued October 7, 1940. Samuel Finley Breese Morse, working with Alfred Vail and Joseph Henry, publically demonstrated the first single-wire electric telegraph on January 11, 1938.

#5 - Issued October 6, 1965. The Morse code on the stamp spells ITU. Founded in 1865 as the International Telegraph Union, the ITU coordinates our radio spectrum.



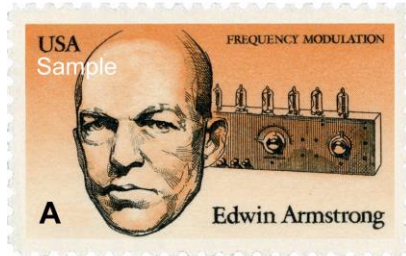
#6 #7 #8 #9 - Issued in 1973, these Progress in Electronics stamps feature various early radio components, Marconi's wireless spark gap transmitter (range of 1¼ miles in 1895), the DeForest Audion (first triode vacuum tube invented in 1906) and the transistor (invented by Bell Labs in 1948).

Kansas QSO Party Sunflower Certificate

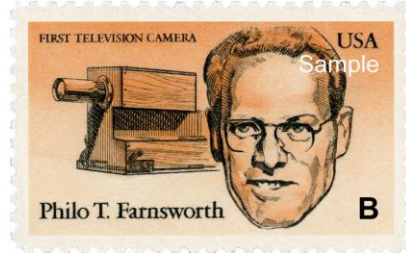
A number of you have earned all nine of our stamps and many of you are getting close. Four additional radio-related stamps plus a bonus stamp are available, **one per year in order**, as our way of thanking you for your participation. A new Kansas QSO Party Sunflower Certificate is now available to hold these stamps.

You are eligible to collect these stamps once you fill your nine-stamp certificate. Just request yours as described on the previous page.

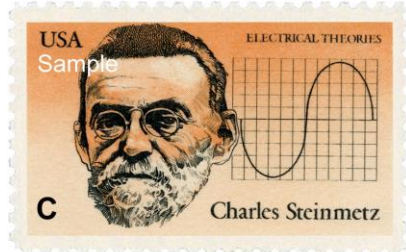
The four American Inventors series 20 cent stamps were issued in 1983.



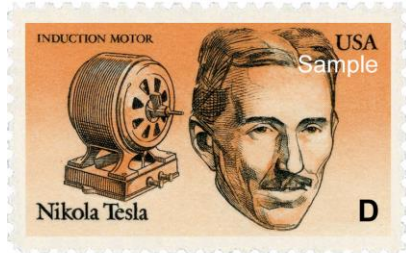
Edwin Armstrong invented the superheterodyne receiver and is best known for developing wide-band FM which he patented in 1933.



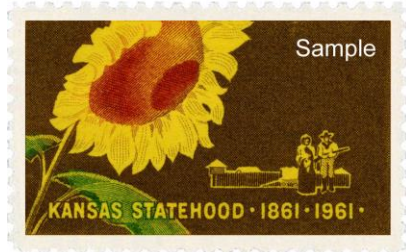
In 1927 at the age of 21, Philo T. Farnsworth invented the image dissector, the first working television camera tube.



In the 1890s, Charles Steinmetz developed alternating current theory which led to the electric power industry in the United States.



In 1887, Nikola Tesla invented an AC induction motor and transformer designs which he sold to George Westinghouse in 1888.



Issued in 1961 to commemorate 100 years of Kansas Statehood (1861-1961). This 4¢ stamp features a sunflower and a pioneer family.

Email KSQP Coordinator Bob Harder, W0BH, at kansas150@hotmail.com with questions or comments.