



## 2019 Kansas QSO Party Rules

24 Aug 2019 1400 – 0200 UTC    25 Aug 2019 1400 – 2000 UTC  
Saturday 9-9 CDT                      Sunday 9-3 CDT

### 2019 Highlights

- Spell **KANSAS**, **QSOPARTY**, **SUNFLOWER** and **YELLOWBRICKROAD** by working our 1x1 call operators to earn antique radio stamps and fill your certificate. Four new stamps are also available over the next four years.
- Our special FT8 category was a success last year and we'll continue that in 2019.
- Plaques, monogrammed sweatshirts and T-shirts are all part of the prize packages this year. You can earn a KSQP T-Shirt by collecting all nine of our stamps!

### OBJECT

Stations outside of Kansas work as many Kansas stations in as many Kansas counties as possible. Stations in Kansas work everyone.

### EXCHANGE

Kansas stations send signal report and county. Stations outside of Kansas send signal report and state, Canadian section, or DX. **See below for FT8 special category rules.**

### QSO POINTS

Stations may be worked once on Phone, once on CW and once on Digital per band. Each complete non-duplicate Phone contact is worth 2 points. Each complete non-duplicate CW or Digital contact is worth 3 points.

### MULTIPLIERS

Multipliers are counted only once. All stations log Kansas contacts with 3-character county abbreviations. The KS abbreviation is not used. Log all other contacts as two characters. Use DX for stations outside of the United States and Canada.

**Kansas Stations** – maximum of **64 multipliers** including:

- US states (50) - First Kansas county logged counts as the Kansas multiplier.
- Canadian provinces/territories (13) – AB BC MB NB NL NT NS NU ON PE QC SK YT
- DX (1)

**Non-Kansas Stations** – maximum of **105 Kansas county multipliers**

### BONUS STATION

All stations receive a one-time bonus of 100 points for contacting **KS0KS** - Santa Fe Trail ARC. Bonus station contacts also count for QSO credit on all allowable bands and modes.

## SCORE

Total score = ( QSO points x multipliers ) + bonus points (maximum 100)

## FREQUENCIES

Contact stations on 80, 40, 20, 15, 10 and 6 meters. WARC band contacts and contacts using repeaters, digipeaters or the internet do not count. All contacts must be simplex.

Suggested frequencies (recommend staying in the General parts of the bands):

- **HF CW** - 40kHz up from band edge (mobile window 35-40)
- **HF Phone** - 3840, 7240, 14240, 21340, 28440
- **HF Digital** - around customary calling frequencies
- **VHF** - around customary calling frequencies or on simplex frequencies

## ENTRY CATEGORIES (Select one plus optional FT8 category)

- **Single-Op QRP** - 5W max, one transmitted signal
- **Single-Op Low Power** - 100W max, one transmitted signal
- **Single-Op High Power** - greater than 100W, one transmitted signal
- **Multi-Op** - any legal power, multi/multi allowed
- **Youth** - 100W max, one transmitted signal (see below)
- **Kansas School** - any legal power, multi/multi allowed (see below)
- **Kansas Mobile Single-Op** - 100W max, one transmitted signal, driver
- **Kansas Mobile Single-Op CW Only** - 100W max, one transmitted signal, driver
- **Kansas Mobile SSB Only** - 100W max, may be Single-Op or Multi-Op
- **Kansas Mobile Multi-Op** - 100W max, one transmitted signal
- **Kansas Mobile Unlimited** - more than 100W and/or multi/multi
- **Kansas Mobile Unassisted** - 100W max, solo driver/operator
- **Kansas Portable** - any legal power, multi/multi allowed (see below)
- **Canada or DX** – any legal power, one transmitted signal, single-op only
- → **FT8 Single-Op**, 100W max, one transmitted signal (see below)

## MISCELLANEOUS

1. Kansas stations should call CQ Kansas QSO Party, CQ KSQP or CQ KQP.
2. Stations calling Kansas should call CQ Kansas or CQ KS.
3. Kansas mobile stations should identify /M or /county. Kansas 1x1 stations should ID with their actual callsign at least once an hour as per FCC regulations.
4. The use of spotting nets using DX clusters, packet nodes, telephone, or other means is permissible for all entry categories.
5. CW contacts must be made in the CW portion of the band. No cross-mode contacts.
6. Mobile is a station that is self-contained and capable of legal motion (street, water, or air) while operating, motion optional.
7. All Kansas Mobile categories may use an additional driver except Unassisted.
8. Mobile unassisted stations are not expected or encouraged to operate while driving.
9. Kansas stations that change counties are considered to be a new station and may be contacted again for point and multiplier credit.
10. If a Kansas station is on a county line between two or more Kansas counties, a separate QSO must be logged for each county listed as worked.

11. Mobiles travelling together may log each other only once per county.
12. **Kansas School** includes students, faculty, staff, alumni, children of the above, etc. Operator(s) may be assisted by a control operator if they are unlicensed.
13. **Youth** category is for out-of-state youth ages 17 and under. Operator(s) may be assisted by a control operator if they are unlicensed. This category replaces our out-of-state School category which never had a plaque winner.
14. **Kansas Portable** is an operation at one or more locations using equipment and/or antennas which must be set up at each location and cannot be used in motion.
15. → **FT8** Log signal report and grid square. Turn in a separate log (text file, ADIF or Cabrillo format) named call\_FT8.LOG (ex: W0BH\_FT8.LOG). In-state and out-of-state winners will be determined by counting non-duplicate contacts (no multipliers). **Do not include FT8 contacts in your regular KSQP log.**

## ENTRIES

**Entries must be date-stamped or postmarked no later than October 1.** Only one entry per call sign is allowed except for FT8 entries. Entry submission implies that the contestant agrees to be bound by the decisions of the Kansas QSO Party Coordinator.

**Be sure to include your call sign, name, address, location and entry category.** Use the standard Cabrillo header or additional text lines at the top of the file as necessary. Kansas mobile logs should be combined into one log file for submittal. If you qualify as a Kansas Rookie, please note that as well. In addition to an official entry, all participants are encouraged to submit score and comments to the **3830 Reflector [www.3830scores.com](http://www.3830scores.com)**.

Entries with incomplete or improperly logged contacts will be subject to penalties or disqualification. Duplicate QSOs are not counted for points and will not result in penalties, but they may be used to prove the integrity of other logs. Please do not remove duplicates.

**Electronic logs should be named with your call sign (ex: W0BH.LOG).** Submit your log by one of the following two methods. Deadline for log submissions is October 1.

**Method 1 (preferred)** – Attach your log file to an email with your call sign in the Subject line. Send the email to [logs@ksgsoparty.org](mailto:logs@ksgsoparty.org). **Cabrillo format preferred.**

**Method 2** - Paper logs, or logs on electronic media may be submitted via postal mail to: **Kansas QSO Party, c/o Bob Harder, W0BH, PO Box 746, Hesston KS 67062.**

## AWARDS

**First Place** – Choice of a monogrammed sweatshirt or plaque awarded to First-place entries with 50 or more contacts. Multi-Op categories receive a plaque. FT8 categories receive a sweatshirt. There is no minimum contact requirement for the FT8 category.

	Power	Single-Operator	Multi-Operator	Mobile/Portable		Canada	DX	FT8
<b>Non-KS</b>	High	1	4	N/A	5 Youth	6	7	20
	Low	2						
	QRP	3						
<b>KS</b>	High	8	11	12-18	19 School	N/A	N/A	21
	Low	9						
	QRP	10						

**Second and Third Place** - An Antique Radio Stamp T-Shirt will be awarded to all single-op Second and Third-place entries, sponsors and 1x1 call operators who don't already have one. Multi-op stations, international stations and stations who already have a T-shirt earn our certificate / stamp award instead.

**Worked All Kansas Sweatshirt** - Awarded to any station contacting all 105 counties. Worked All Kansas has been awarded the past eight years.

**Kansas Rookie Sweatshirt** - Awarded for the highest in-state score from a first-time Kansas QSO Party participant in a Single-Op Fixed, Mobile or Portable category.

**Kansas QSO Party Sunday Sweatshirt** - This sweatshirt is earned by an out-of-state single-op participant who didn't win a category. Awarded for the highest Sunday (Day 2) score. You may participate on both days and still be eligible for this award.

### **Bonus Drawing**

Every non-winning Kansas log (minimum 25 contacts) receives one entry and every non-winning non-Kansas log receives one entry for each unique 1x1 call worked in separate bonus drawing pools. If you didn't win a category, you might still win one of our monogrammed amateur radio stamp T-shirts or sweatshirts!

### **Kansas QSO Party Certificate and Antique Radio Stamps**

Awarded for spelling **KANSAS**, **SUNFLOWER**, **QSOPARTY** or **YELLOWBRICKROAD** using suffixes of selected 1x1 calls. Duplicate letters in a word require two different 1x1 calls. Letters may be shared between words. KS0KS counts as a wild card and may be used in place of one missing letter.

Example: w0K k0A n0N k0S n0A w0S w0S n0U w0N w0F k0L w0O w0W ...

Our collection certificate, first issued in 2015, has room for all nine stamps. We keep track of which stamps you have earned for this certificate, not counting previous certificates which also had these stamps. Until you fill your certificate, you may choose one stamp for each word you spell (maximum 2 stamps). Stations spelling YELLOWBRICKROAD earn a bonus stamp (if needed), or our new 2019 stamp. You will be able to download your certificate in pdf or jpg format, and your stamp(s) will come by mail.

To receive your stamps and certificate (if needed), you must first send in a log as listed above. Then send an email with your call in the subject line to [kansas150@hotmail.com](mailto:kansas150@hotmail.com). List your name as you'd like it to appear, your address, your email and which stamp(s) in order of preference. If you prefer, we can print and mail your certificate (only one needed). Send the details above and \$3 to cover paper, ink, and mailing expenses to:

**Bob Harder, W0BH, PO Box 746, Hesston KS 67062 (make check to Bob Harder).**

### **Antique Radio Stamp T-Shirts**

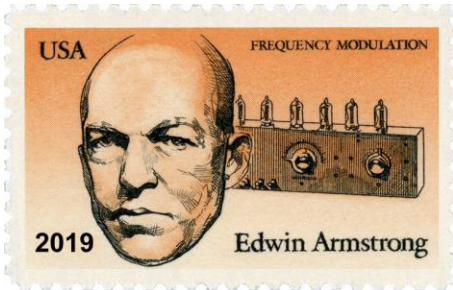
Stations who have earned all nine stamps on the nine-stamp certificate in a previous year, who don't have a T-shirt, and who turn in a 2019 log will automatically receive the antique radio stamp T-shirt (US only due to high postage costs). Collect all nine of our stamps and earn a Kansas QSO Party antique radio stamp T-shirt!

## Kansas QSO Party Award

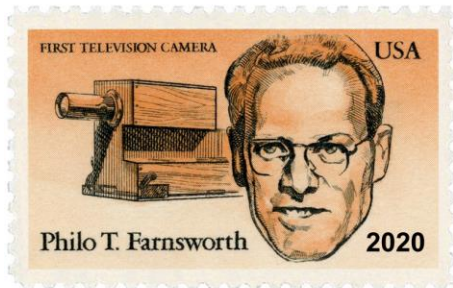
A number of you have earned all nine of our stamps and many of you are getting close. Four additional radio-related stamps are now available, one per year, as our way of thanking you for your participation. A new Kansas QSO Party Award certificate to hold these stamps will be available at a later date.

You are eligible to collect these stamps once you fill your nine-stamp certificate. Just request yours as described on the previous page.

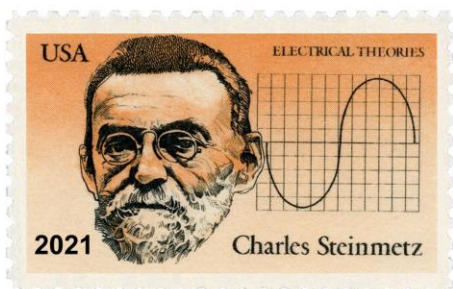
These four 20-cent stamps are from the American Inventors series issued in 1983.



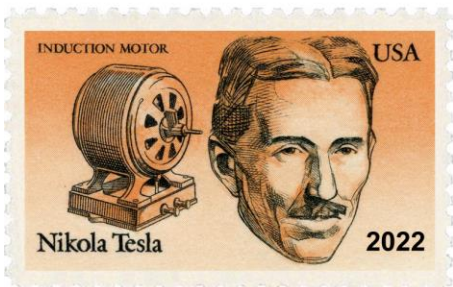
Edwin Armstrong invented the superheterodyne receiver and is best known for developing wide-band FM which he patented in 1933.



In 1927 at the age of 21, Philo T. Farnsworth invented the image dissector, the first working television camera tube.



In the 1890s, Charles Steinmetz developed alternating current theory which led to the electric power industry in the United States.



In 1887, Nikola Tesla invented an AC induction motor and transformer designs which he sold to George Westinghouse in 1888.

## Antique Radio Stamps

You can earn these genuine antique radio stamps by working our 1x1 call operators during the Kansas QSO Party. Follow the directions above under Kansas QSO Party Certificate and Antique Radio Stamps.



#1 - Issued December 15, 1960. Commemorates Echo I, the first passive communications satellite.



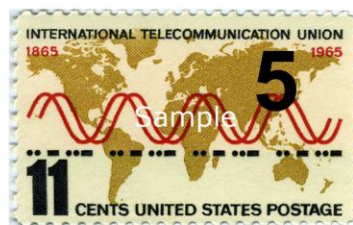
#2 - Issued December 15, 1964 on the 50th anniversary of the ARRL. Note that 2014 was the ARRL Centennial. Commemorates the amateur radio operators who provided emergency communications for the Alaska earthquake earlier in the year.



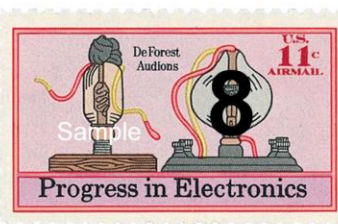
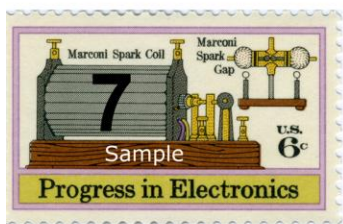
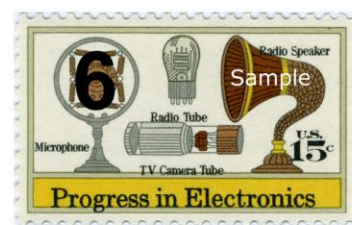
#3 - Issued August 1, 1967. Commemorates 25th anniversary of the Voice of America.



#4 - Issued October 7, 1940. Samuel Finley Breese Morse, working with Alfred Vail and Joseph Henry, publically demonstrated the first single-wire electric telegraph on January 11, 1938.



#5 - Issued October 6, 1965. The Morse code on the stamp spells ITU. Founded in 1869 as the International Telegraph Union, the ITU coordinates our radio spectrum.



#6 #7 #8 #9 - Issued in 1973, these Progress in Electronics stamps feature various early radio components, Marconi's wireless spark gap transmitter (range of 1¼ miles in 1895), the DeForest Audion (first triode vacuum tube invented in 1906) and the transistor (invented by Bell Labs in 1948).

---

Email KSQP Coordinator Bob Harder, W0BH, at [kansas150@hotmail.com](mailto:kansas150@hotmail.com) with questions or comments.