



## 2018 Tenth Anniversary Kansas QSO Party Rules

25 Aug 2018 1400 – 0200 UTC    26 Aug 2018 1400 – 2000 UTC  
Saturday 9-9 CDT                      Sunday 9-3 CDT

### NEW FOR 2018

- Spell **KANSAS**, **QSOPARTY**, **SUNFLOWER** and **YELLOWBRICKROAD** to earn antique radio stamps and fill your certificate by working our 57 1x1 calls.
- We've added one new category (Kansas Portable) and one special category (FT8).
- To celebrate our tenth anniversary, we are producing an amateur radio stamp theme monogrammed sweatshirt and a T-shirt. The sweatshirts will be awarded instead of plaques for this year. Continue reading to see how to earn our T-shirt and stamps.

### OBJECT

Stations outside of Kansas work as many Kansas stations in as many Kansas counties as possible. Stations in Kansas work everyone.

### EXCHANGE

Kansas stations send signal report and county. Stations outside of Kansas send signal report and state, Canadian section, or DX. **See below for FT8 special category rules.**

### QSO POINTS

Stations may be worked once on Phone, once on CW and once on Digital per band. Each complete non-duplicate Phone contact is worth 2 points. Each complete non-duplicate CW or Digital contact is worth 3 points.

### MULTIPLIERS

Multippliers are counted only once. All stations log Kansas contacts with 3-character county abbreviations. The KS abbreviation is not used. Log all other contacts as two characters. Use DX for stations outside of the United States and Canada.

**Kansas Stations** – maximum of **64 multipliers** including:

- US states (50) - First Kansas county logged counts as the Kansas multiplier.
- Canadian provinces/territories (13) – AB BC MB NB NL NT NS NU ON PE QC SK YT
- DX (1)

**Non-Kansas Stations** – maximum of **105 Kansas county multipliers**

### BONUS STATION

All stations receive a one-time bonus of 100 points for contacting **KSOKS** - Santa Fe Trail ARC. Bonus station contacts also count for QSO credit on all allowable bands and modes.

## SCORE

Total score = ( QSO points x multipliers ) + bonus points (maximum 100)

## FREQUENCIES

Contact stations on 80, 40, 20, 15, 10 and 6 meters. WARC band contacts and contacts using repeaters, digipeaters or the internet do not count. All contacts must be simplex.

Suggested frequencies (recommend staying in the General parts of the bands):

- **HF CW** - 40kHz up from band edge (mobile window 35-40)
- **HF Phone** - 3840, 7240, 14240, 21340, 28440
- **HF Digital** - around customary calling frequencies
- **VHF** - around customary calling frequencies or on simplex frequencies

## ENTRY CATEGORIES (Select one plus optional FT8 category)

- **Single-Op QRP** - 5W or less, one transmitted signal
- **Single-Op Low Power** - 100W or less, one transmitted signal
- **Single-Op High Power** - greater than 100W, one transmitted signal
- **Multi-Op** - any legal power, multi/multi allowed
- **Youth** - 100W or less, one transmitted signal (see below)
- **Kansas School** - any legal power, multi/multi allowed (see below)
- **Kansas Mobile Single-Op** - 100W or less, one transmitted signal
- **Kansas Mobile Single-Op CW Only** - 100W or less, one transmitted signal
- **Kansas Mobile SSB Only** - 100W or less, may be Single-Op or Multi-Op
- **Kansas Mobile Multi-Op** - 100W or less, one transmitted signal
- **Kansas Mobile Unlimited** - any legal power, multi/multi allowed
- **Kansas Mobile Unassisted** - 100W or less, solo driver/operator
- **Kansas Portable** - any legal power, multi/multi allowed (see below)
- → **FT8** - 100W or less, one transmitted signal (see below)

## MISCELLANEOUS

1. Kansas stations should call CQ Kansas QSO Party, CQ KSQP or CQ KQP.
2. Stations calling Kansas should call CQ Kansas or CQ KS.
3. Kansas mobile stations should identify /M or /county. Kansas 1x1 stations should ID with their actual callsign at least once per hour as per FCC regulations.
4. The use of spotting nets using DX clusters, packet nodes, telephone, or other means is permissible for all entry categories.
5. CW contacts must be made in the CW portion of the band. No cross-mode contacts.
6. Mobile is a station that is self-contained and capable of legal motion (street, water, or air) while operating, motion optional.
7. All Kansas Mobile categories may use an additional driver except Unassisted.
8. Mobile Unassisted stations are not expected or encouraged to operate while driving.
9. Kansas stations that change counties are considered to be a new station and may be contacted again for point and multiplier credit.
10. If a Kansas station is on a county line between two or more Kansas counties, a separate QSO must be logged for each county listed as worked.
11. Mobiles travelling together may log each other only once per county.

12. **Kansas School** includes students, faculty, staff, alumni, children of the above, etc. Operator(s) may be assisted by a control operator if they are unlicensed.
13. **Youth** category is for out-of-state youth ages 17 and under. Operator(s) may be assisted by a control operator if they are unlicensed. This category replaces our out-of-state School category which never had a plaque winner.
14. **Kansas Portable** is an operation at one or more locations using equipment and/or antennas which must be set up at each location and cannot be used in motion.
15. → **FT8** is a special category for this year to help with the ARRL International Grid Chase. Log signal report and grid square. Turn in a separate log (text file, ADIF or Cabrillo format) named call\_FT8.LOG (ex: W0BH\_FT8.LOG). In-state and out-of-state winners will be determined by counting non-duplicate contacts (no multipliers). **Do not include FT8 contacts in your regular KSQP log.**

## ENTRIES

**Entries must be date-stamped or postmarked no later than October 1.** Only one entry per call sign is allowed except for FT8 entries. Entry submission implies that the contestant agrees to be bound by the decisions of the Kansas QSO Party Coordinator.

**Be sure to include your call sign, name, address, location and entry category.** Use the standard Cabrillo header or additional text lines at the top of the file as necessary. Kansas mobile logs should be combined into one log file for submittal. If you qualify as a Kansas Rookie, please note that as well. In addition to an official entry, all participants are encouraged to submit score and comments to the **3830 Reflector [www.3830scores.com](http://www.3830scores.com)**.

Entries with incomplete or improperly logged contacts will be subject to penalties or disqualification. Duplicate QSOs are not counted for points and will not result in penalties, but they may be used to prove the integrity of other logs. Please do not remove duplicates.

**Electronic logs should be named with your call sign (ex: W0BH.LOG).** Submit your log by one of the following two methods. Deadline for log submissions is October 1.

**Method 1 (preferred)** – Attach your log file to an email with your call sign in the Subject line. Send the email to [logs@ksgsoparty.org](mailto:logs@ksgsoparty.org). **Cabrillo format preferred.**

**Method 2** - Paper logs, or logs on electronic media may be submitted via postal mail to: **Kansas QSO Party, c/o Bob Harder, W0BH, Box 3000, Hesston KS 67062.**

## AWARDS

**First Place** - Monogrammed sweatshirts will be awarded to First-place entries with 50 or more contacts. Categories with more than one operator instead receive T-shirts for each team member (limit 5). There is no minimum contact requirement for the FT8 category.

|               | Power | Single-Operator | Multi-Operator | Mobile/Portable |              | Canada | DX  | FT8 |
|---------------|-------|-----------------|----------------|-----------------|--------------|--------|-----|-----|
| <b>Non-KS</b> | High  | 1               | 4              | N/A             | 5<br>Youth   | 6      | 7   | 20  |
|               | Low   | 2               |                |                 |              |        |     |     |
|               | QRP   | 3               |                |                 |              |        |     |     |
| <b>KS</b>     | High  | 8               | 11             | 12-18           | 19<br>School | N/A    | N/A | 21  |
|               | Low   | 9               |                |                 |              |        |     |     |
|               | QRP   | 10              |                |                 |              |        |     |     |

**Worked All Kansas Sweatshirt** - Awarded to any station contacting all 105 counties. Worked All Kansas has been awarded the past seven years.

**Kansas Rookie Sweatshirt** - Awarded for the highest in-state score from a first-time Kansas QSO Party participant in a Single-Op Fixed, Mobile or Portable category.

**Kansas QSO Party “Filtered” Sweatshirts** - These sweatshirts are earned by out-of-state single-op participants who didn't win a category. Awarded for the highest Sunday (Day 2) score or the highest CW overall score. Participate on both days using all modes and any power level and still be eligible for either award.

### **Bonus Sweatshirt**

Every non-winning Kansas log (minimum 25 contacts) receives one entry and every non-winning non-Kansas log receives one entry for each unique 1x1 call worked in separate bonus sweatshirt drawing pools. If you didn't win a category, you might still win one of our monogrammed amateur radio stamp sweatshirts!

### **Kansas QSO Party Certificate and Antique Radio Stamps**

Awarded for spelling **KANSAS, SUNFLOWER, QSOPARTY** or **YELLOWBRICKROAD** using suffixes of selected 1x1 calls. Duplicate letters in a word require two different 1x1 calls. Letters may be shared between words. KS0KS counts as a wild card and may be used in place of one missing letter.

Example: w0K k0A n0N k0S n0A w0S w0S n0U w0N w0F k0L w0O w0W ...

Our current certificate, first issued in 2015, has room for all nine stamps. We keep track of which stamps you have earned for this certificate, not counting previous certificates which also had stamps. Until you fill your certificate, you may choose one stamp for each word you spell (maximum 2 stamps). Stations spelling YELLOWBRICKROAD earn a bonus stamp (if needed). You will be able to download your certificate in pdf or jpg format, and your stamp(s) will come by mail.

To receive your stamps and certificate (if needed), you must first send in a log as listed above. Then send an email with your call in the subject line to [kansas150@hotmail.com](mailto:kansas150@hotmail.com). List your name as you'd like it to appear, your address, your email and which stamp(s) in order of preference. If you prefer, we can print and mail your certificate. Send the details above and \$3 to cover paper, ink, and mailing expenses to:  
**Bob Harder, W0BH, Box 3000, Hesston KS 67062 (make check to Bob Harder).**

### **Kansas QSO Party Award**

An Antique Radio Stamp T-Shirt will be awarded to all Second and Third-place entries (US only), sponsors, 1x1 call operators, and the top five non-1x1 call Kansas stations who make at least 25 contacts. International stations earn our certificate / stamp award instead.

### **Antique Radio Stamp T-Shirts**

Stations who earn or have earned all nine stamps on the current certificate and turn in a 2018 log automatically receive our Antique Radio Stamp T-shirt (US only due to high postage costs). Additional T-shirts will be awarded as sponsor donations permit. The more contacts and 1x1 callsigns you work, the more likely we are to send you a T-shirt!



## 2018 Kansas QSO Party Sponsors

**Associated Radio - Overland Park KS    B & H Sales - Derby KS  
Hesston College ARC    Johnson County RAC    Santa Fe Trail ARC  
Wind Rose LLC (KS0LP)    Marshall Toburen (AA0FO)**



#1 - Issued December 15, 1960. Commemorates Echo I, the first passive communications satellite.



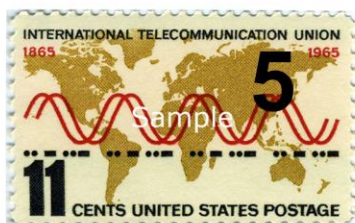
#2 - Issued December 15, 1964 on the 50th anniversary of the ARRL. Note that 2014 was the ARRL Centennial. Commemorates the amateur radio operators who provided emergency communications for the Alaska earthquake earlier in the year.



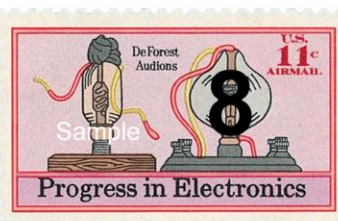
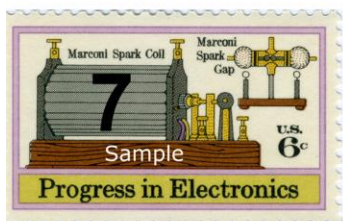
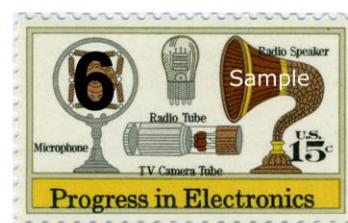
#3 - Issued August 1, 1967. Commemorates 25th anniversary of the Voice of America.



#4 - Issued October 7, 1940. Samuel Finley Breese Morse, working with Alfred Vail and Joseph Henry, publically demonstrated the first single-wire electric telegraph on January 11, 1938.



#5 - Issued October 6, 1965. The Morse code on the stamp spells ITU. Founded in 1869 as the International Telegraph Union, the ITU coordinates our radio spectrum.



#6 #7 #8 #9 - Issued in 1973, these Progress in Electronics stamps feature various early radio components, Marconi's wireless spark gap transmitter (range of 1¼ miles in 1895), the DeForest Audion (first triode vacuum tube invented in 1906) and the transistor (invented by Bell Labs in 1948).

---

Email KSQP Coordinator Bob Harder, W0BH, at [kansas150@hotmail.com](mailto:kansas150@hotmail.com) with questions or comments.